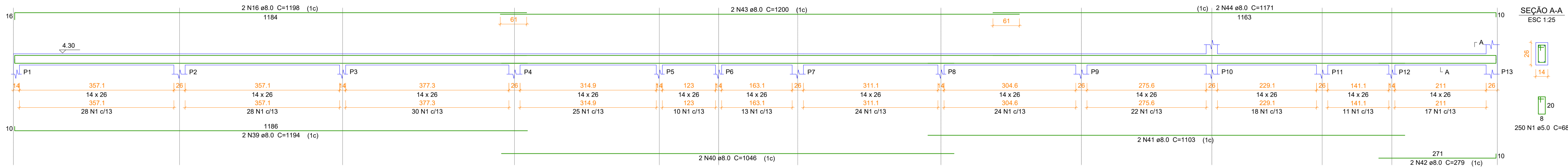
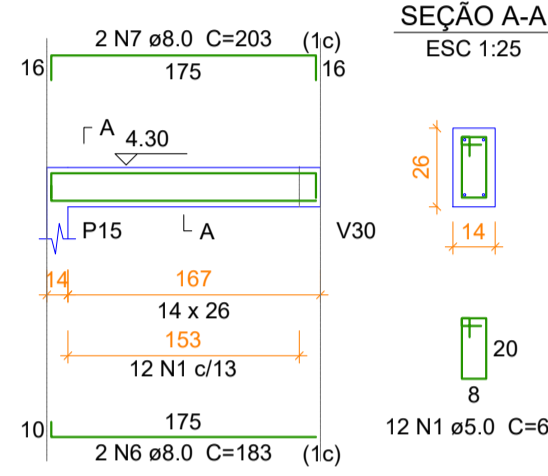


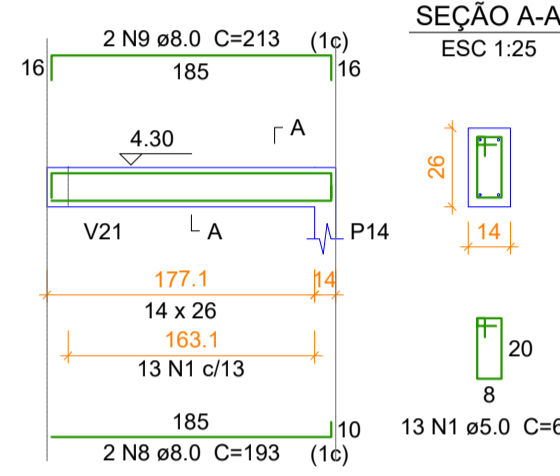
V1
ESC 1:50



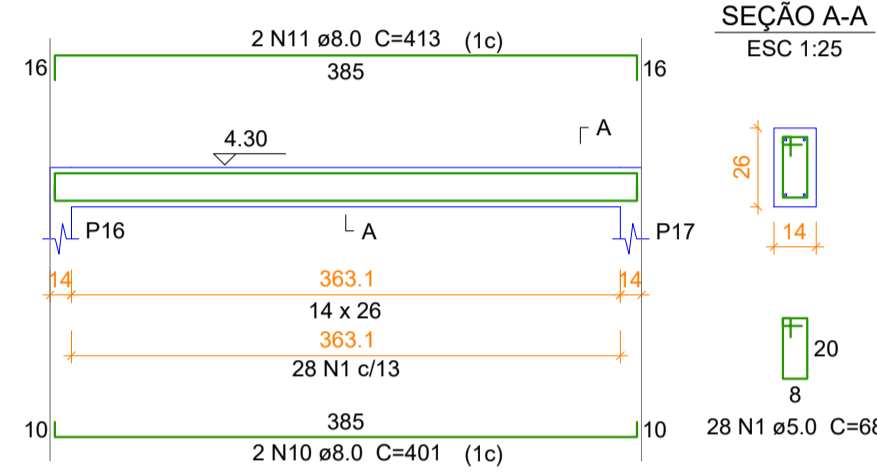
V2
ESC 1:50



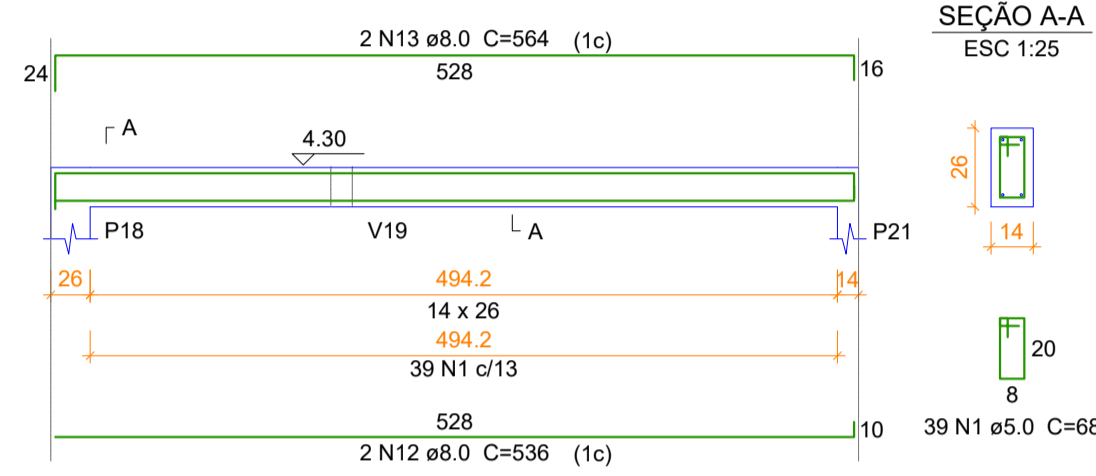
V3
ESC 1:50



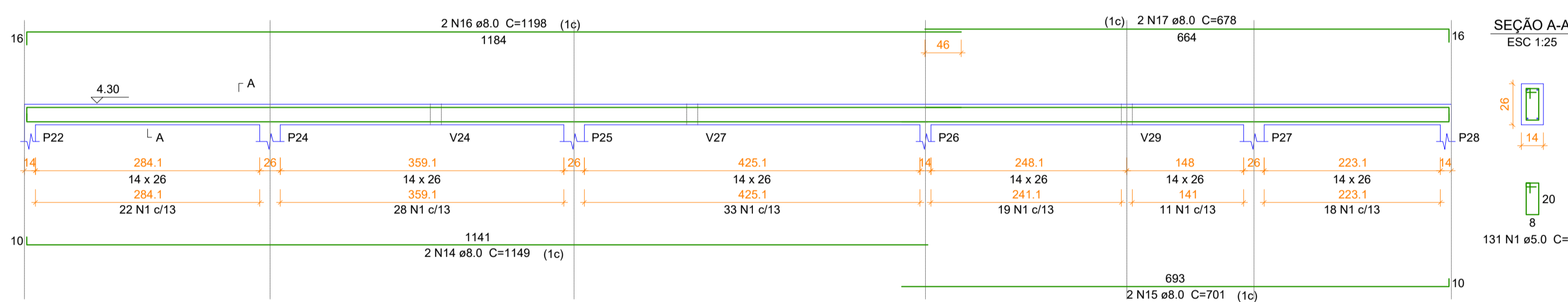
V4
ESC 1:50



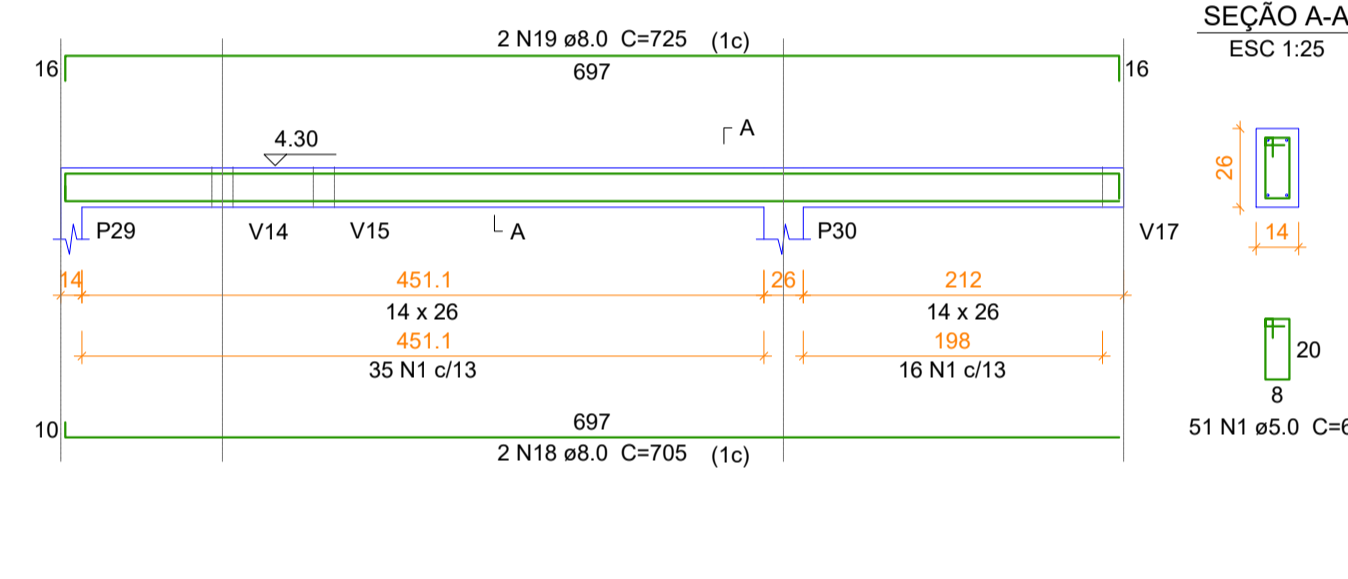
V5
ESC 1:50



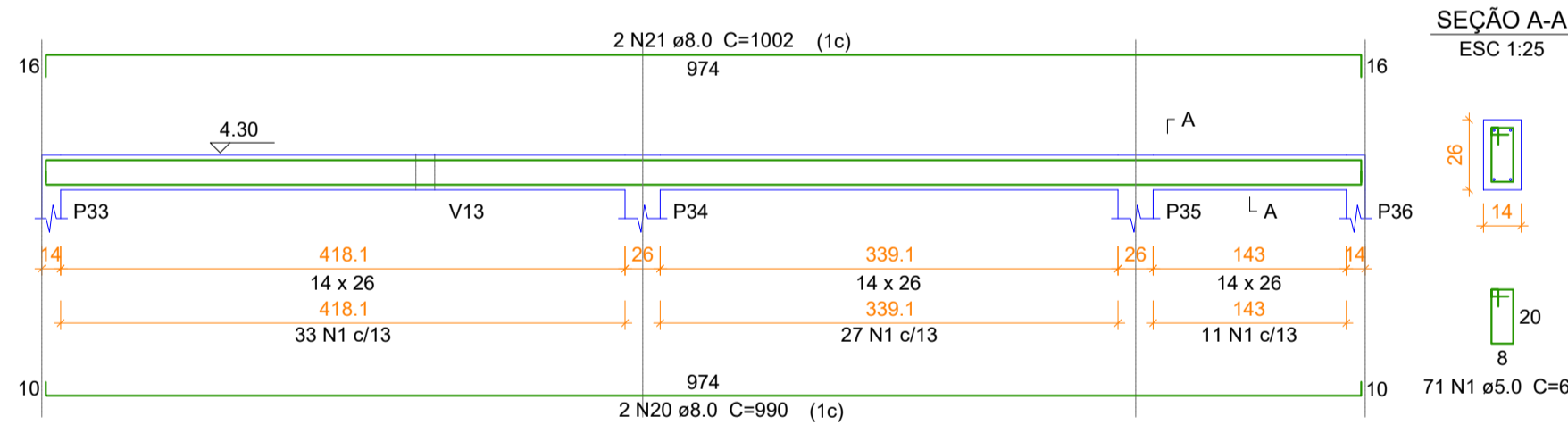
V6
ESC 1:50



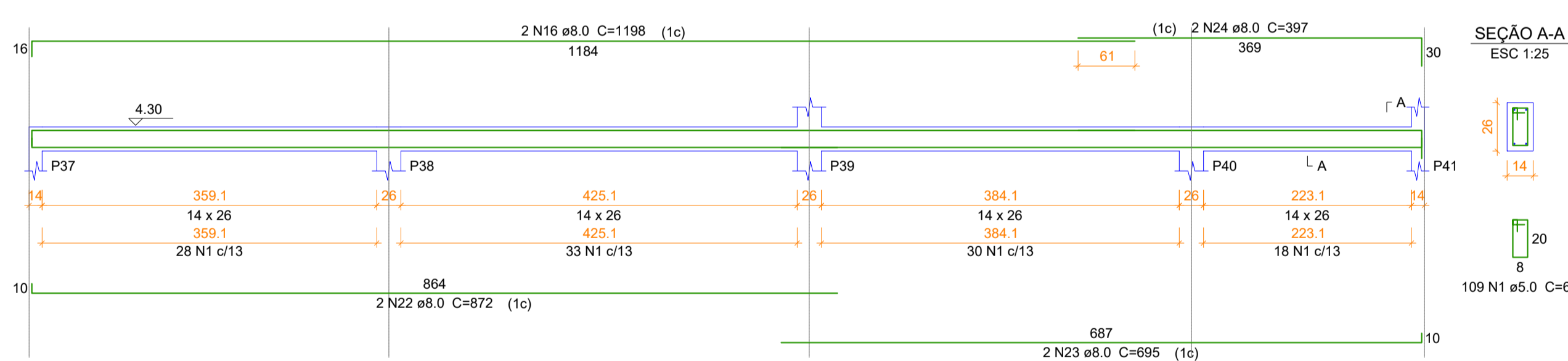
V7
ESC 1:50



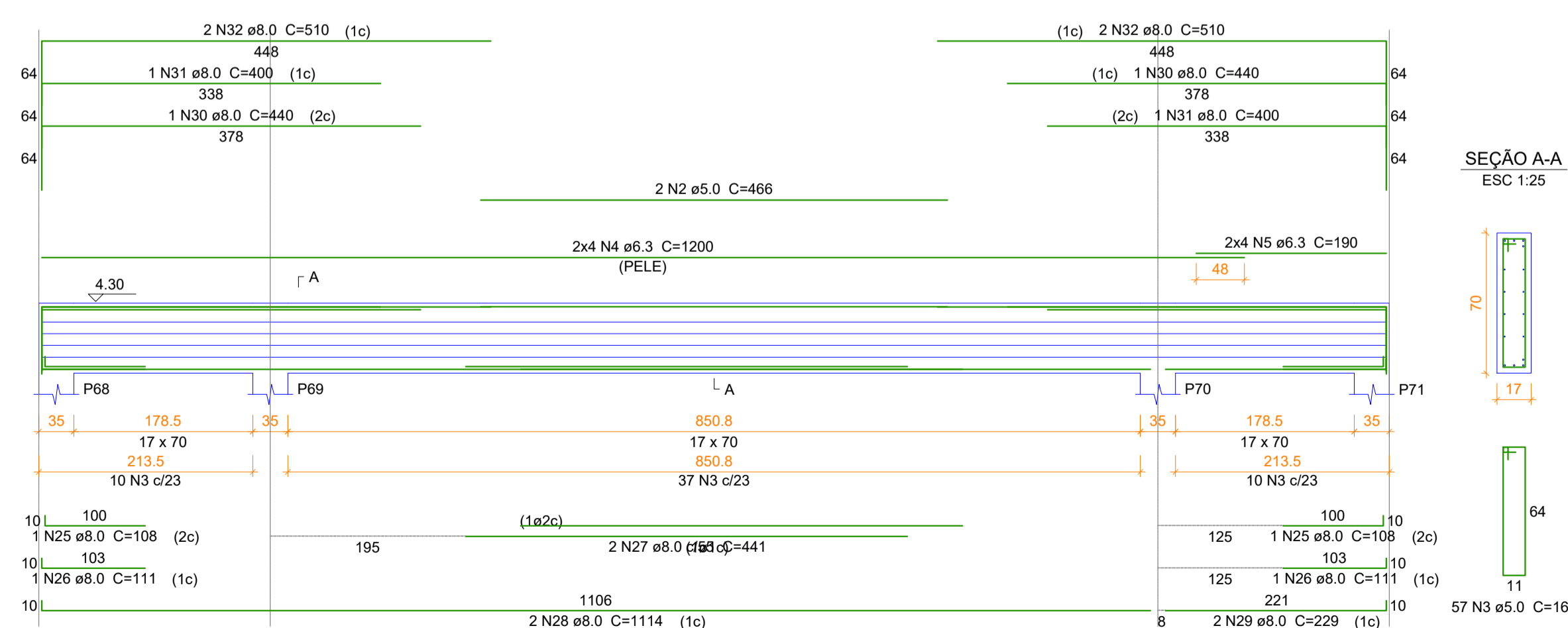
V8
ESC 1:50



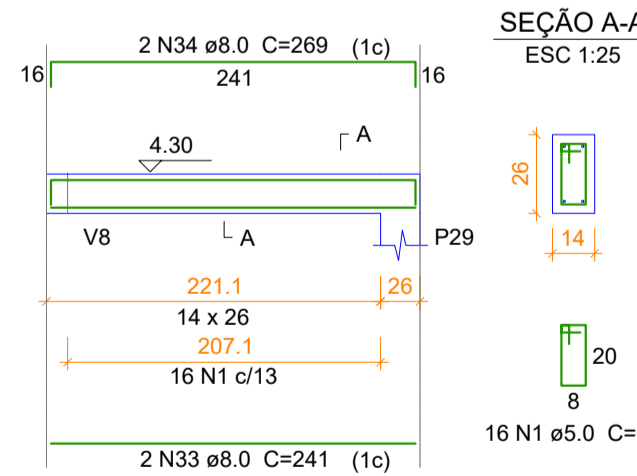
V9
ESC 1:50



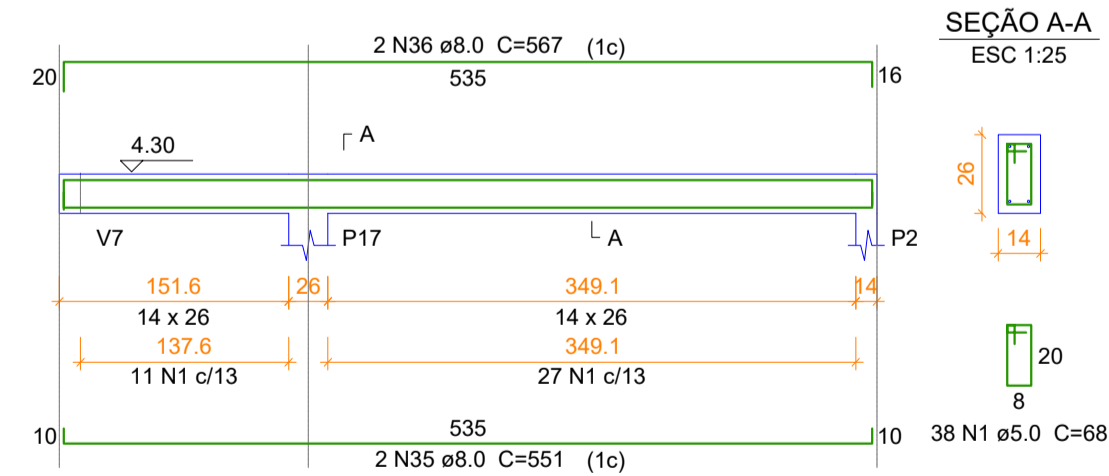
V11
ESC 1:50



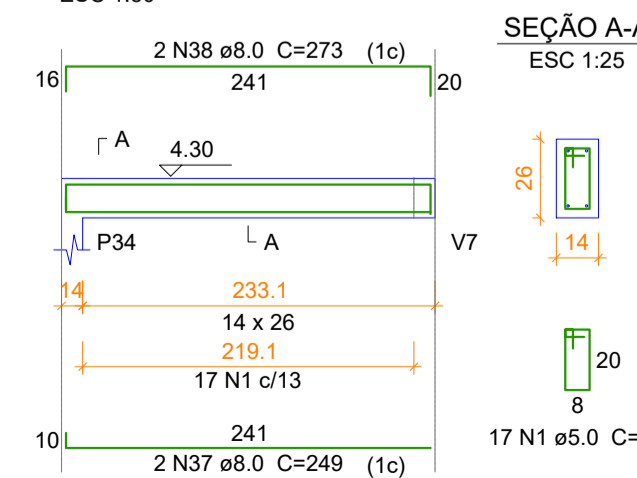
V13
ESC 1:50



V14
ESC 1:50



V15
ESC 1:50



Relação do aço

| AÇO | N | DIAM | Q | UNIT (cm) | C.TOTAL (cm) |
|------|----|------|-----|-----------|--------------|
| CA60 | 1 | 5.0 | 775 | 68 | 52700 |
| | 2 | 5.0 | 2 | 466 | 932 |
| | 3 | 5.0 | 57 | 162 | 9234 |
| CA50 | 4 | 6.3 | 8 | 1200 | 9600 |
| | 5 | 6.3 | 8 | 190 | 1520 |
| | 6 | 8.0 | 2 | 183 | 366 |
| | 7 | 8.0 | 2 | 203 | 406 |
| | 8 | 8.0 | 2 | 193 | 386 |
| | 9 | 8.0 | 2 | 213 | 426 |
| | 10 | 8.0 | 2 | 401 | 802 |
| | 11 | 8.0 | 2 | 413 | 826 |
| | 12 | 8.0 | 2 | 536 | 1072 |
| | 13 | 8.0 | 2 | 564 | 1128 |
| | 14 | 8.0 | 2 | 1149 | 2298 |
| | 15 | 8.0 | 2 | 701 | 1402 |
| | 16 | 8.0 | 6 | 1198 | 7188 |
| | 17 | 8.0 | 2 | 678 | 1356 |
| | 18 | 8.0 | 2 | 705 | 1410 |
| | 19 | 8.0 | 2 | 725 | 1450 |
| | 20 | 8.0 | 2 | 990 | 1980 |
| | 21 | 8.0 | 2 | 1002 | 2004 |
| | 22 | 8.0 | 2 | 872 | 1744 |
| | 23 | 8.0 | 2 | 695 | 1390 |
| | 24 | 8.0 | 2 | 397 | 794 |
| | 25 | 8.0 | 2 | 108 | 216 |
| | 26 | 8.0 | 2 | 111 | 222 |
| | 27 | 8.0 | 2 | 441 | 882 |
| | 28 | 8.0 | 2 | 1114 | 2228 |
| | 29 | 8.0 | 2 | 229 | 458 |
| | 30 | 8.0 | 2 | 440 | 880 |
| | 31 | 8.0 | 2 | 400 | 800 |
| | 32 | 8.0 | 4 | 510 | 2040 |
| | 33 | 8.0 | 2 | 241 | 482 |
| | 34 | 8.0 | 2 | 269 | 538 |
| | 35 | 8.0 | 2 | 551 | 1102 |
| | 36 | 8.0 | 2 | 567 | 1134 |
| | 37 | 8.0 | 2 | 249 | 498 |
| | 38 | 8.0 | 2 | 273 | 546 |
| | 39 | 8.0 | 2 | 1194 | 2388 |
| | 40 | 8.0 | 2 | 1046 | 2092 |
| | 41 | 8.0 | 2 | 1103 | 2206 |
| | 42 | 8.0 | 2 | 279 | 558 |
| | 43 | 8.0 | 2 | 1200 | 2400 |
| | 44 | 8.0 | 2 | 1171 | 2342 |

Resumo do aço

| AÇO | DIAM | C.TOTAL (m) | PESO + 10 % (kg) |
|------------|------|-------------|------------------|
| CA50 | 6.3 | 111.2 | 29.9 |
| | 8.0 | 524.4 | 227.6 |
| CA60 | 5.0 | 628.7 | 106.6 |
| PESO TOTAL | | | |
| CA50 | | 257.5 | |
| CA60 | | 106.6 | |

Vol. de concreto total (C-25) = 5.52 m³
Área de forma total = 92.11 m²

PROJETO ESTRUTURAL



PREFEITURA MUNICIPAL
TRÊS BARRAS DO PARANÁ

OBRA:

AMPLIAÇÃO CENTRO DE EVENTOS MUNICIPAL

ENGENHEIRO:

PROLONGAMENTO AVENIDA SÃO PAULO, SN.

DESENHISTA:

CAMILA THEISEN

CONTEÚDO:

DETALHAMENTO DE VIGAS - VIGA SUPERIOR (01/03)

DATA:

JULHO/2025

PROPRIETÁRIO:

PREFEITURA MUNICIPAL DE TRÊS BARRAS DO PARANÁ

PRONCHIA:

10/18